



QUALITY TOWN COUNCIL



INVESTORS IN PEOPLE

Great Aycliffe Town Council

Council Offices - School Aycliffe Lane - Newton Aycliffe - Co. Durham DL5 6QF

Telephone: 01325 300700 • Fax: 01325 301053

Email: info@great-aycliffe.gov.uk • Website: www.great-aycliffe.gov.uk



Big enough to matter
Small enough to care



AUTUMN 2010



17th September 2010

COMMUNITY ENHANCEMENT AWARDS

Mr & Mrs W. Bewley, 1 Stanfield Road have won the Best Overall Front Garden/Display for 2010. The Mayor of Great Aycliffe, Councillor Mrs Dorothy Bowman, presented Mr & Mrs Bewley with the 'Lady Beveridge Rose Bowl', and a bouquet of flowers as the winner in the Council's Annual Community Enhancement Award.

Nominations were received from the general public, which were then validated by council staff. Nominees have been issued with a Community Enhancement Certificate in recognition of the contribution that their garden or display has made to the environmental appearance of Great Aycliffe.

The photograph below shows Mr & Mrs Bewley with the Mayor of Great Aycliffe, Councillor Mrs Dorothy Bowman.



MAYOR'S CHARITY GOLF TOURNAMENT

The Mayor of Great Aycliffe, Councillor Dorothy Bowman, hosted a Charity Golf Day at the Oakleaf Golf Complex on Friday, 10th September 2010.

The event was a huge success with an amount of £566 being raised for her nominated charities which are the Chyrelle Addams Breast Cancer Appeal Trust and Domestic Violence (WVWA).

The Mayor would like to take this opportunity to thank the sponsors and supporters of the day, namely:

- | | | |
|-------------------------------|-----------------------------|-----------------------------|
| Gregg Little Testing Centre | Don Walker Butchers | |
| Newton Aycliffe Rotary Club | Durham County Council | |
| E.W. Knapton (Insurance) Ltd. | Newton Press | |
| John Wade Haulage Ltd. | Sabre Rail Services Ltd. | Newton Aycliffe Town Centre |
| Newton Aycliffe Sports Club | Aslan Golf Ltd. | Oakleaf Golf Club |
| Newcastle Breweries Ltd. | Great Aycliffe Town Council | Ellies Pies |
| | | Tesco |



The hospitality tent at the 6th tee was well received and the Mayor would like to thank fellow Councillors and friends for helping with the organisation of the refreshments.

The presentation evening and dinner was held at The Oakleaf Sports Complex Function Room and the winners of the competition were Oakleaf Golf Club. The Mayor presented the team with the annual 'Hydro Polymers' Trophy.



Results of the day:

- | | |
|--------------------------|-------------------|
| Winners | Oakleaf Golf Club |
| Second | Aslan Golf |
| Third | Big Golf Club |
| Individual Winner | Ian Gaul |
| Longest Drive (3rd Hole) | Neil Whinham |
| Nearest the Pin (4th) | Stephen Lines |
| Nearest the Pin (11th) | Carl Pepper |
| Nearest the Pin (13th) | Shaun Poulter |

SCHOOL AYCLIFFE PLAY AREA REFURBISHMENT

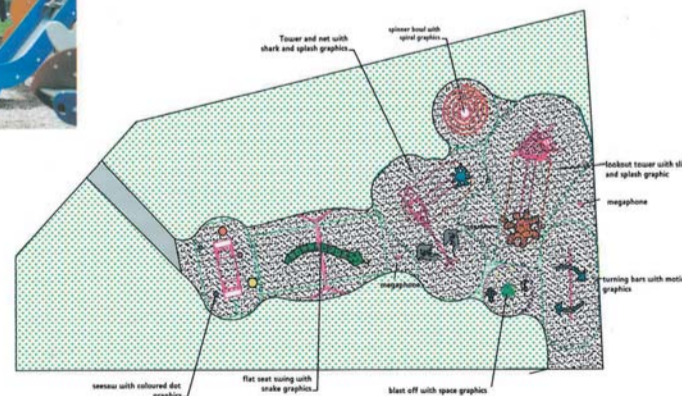
The refurbishment of the play area at School Aycliffe is due to commence at the end of September 2010.

The old equipment will be removed and replaced with play equipment that offers a more adventurous range of activities for users.

The installation work is expected to take approximately 3 weeks to complete.

Pictured on the right is a copy of the layout of the new play area.

SCHOOL AYCLIFFE PLAY AREA
SCHOOL AYCLIFFE
NEWTON AYCLIFFE



CUSTOMER PANEL

The next meeting of Great Aycliffe Town Council Customer Panel will be:

Tuesday 21st September 2010, 6pm at the Town Council Offices, School Aycliffe Lane

A short presentation will be given by the Chairman of Aycliffe Youth Council.

However, the Town Council's Finance Manager will be in attendance to discuss the impact of government cuts on the Town Council and financial matters in general.

The meetings are open to members of the public and residents are encouraged to attend. Why not come along and see what's happening.

The doors will be open to the public 30 minutes prior to the meeting.

If you would like any further information please contact Chrissy Walton 01325 300700

MEETINGS OF THE COUNCIL

22nd Sept. 2010	Full Council	7.15 p.m.
20th Oct. 2010	Environment	7.15 p.m.
20th Oct. 2010	Recreation	* 7.15 p.m.
27th Oct. 2010	Policy & Resources	7.15 p.m.
3rd Nov. 2010	Full Council	7.15 p.m.
1st Dec. 2010	Environment	7.15 p.m.
1st Dec. 2010	Recreation	* 7.15 p.m.
8th Dec. 2010	Policy & Resources	7.15 p.m.
15th Dec. 2010	Council	7.15 p.m.

* The **Recreation Committee** will commence immediately after the Environment Committee Meeting.

4th MAY, 2011 - PARISH MEETING - 7.15 p.m. ()**

**11th MAY, 2011 - COUNCIL ANNUAL MEETING
- 7.15 p.m.**

(**)(N.B. – this is not a meeting of the Town Council but a meeting of local government electors in the Council's area. Any queries about the Parish Meeting can be made to the Town Clerk on 01325 300700).

PUBLIC QUESTIONS:

Members of the public are permitted to make representations, answer questions and give evidence in respect of any item of business included in the agenda. Questions will not be received by the Council which are in furtherance of a person's individual circumstances or which are about a matter where there is a right of appeal to the courts, a tribunal or government minister. A question will not be received by the Council where the issue it concerns has been the subject of a decision of the Council in the last six months.

The Public and Press are cordially invited to attend.

"The Public Entrance to the Council Chamber will be open 30 minutes prior to the commencement of meetings".

CASUAL VACANCY WEST WARD

A casual vacancy in the West Ward of Newton Aycliffe was declared by the Council on the 11th August 2010 following the resignation of Mrs. Helen Hutchinson.

Elections for this vacancy will take place on Thursday, 28th October 2010.

ELECTIONS



Would you like to be part of an organisation that really can make a difference?

YES Well look no further.

Aycliffe Youth Council is looking for 10 new members to join their organisation.

- You must be aged between 11 and 19.
- Live or go to school in Newton Aycliffe, School Aycliffe, Aycliffe Village or Middridge.
- Be willing to promote the work of the Youth Council and ideas of young people.

What does the Youth Council do;

- provides young people with the opportunity to convey their ideas and priorities to Great Aycliffe Town Council and other organisations;
- encourages a culture of participation in the democratic process;
- provides a mechanism for Great Aycliffe Town Council and other agencies to consult with young people from the Aycliffe area;
- provides an opportunity to give grants to good local causes;
- helps remove barriers and stereotyping about young people.

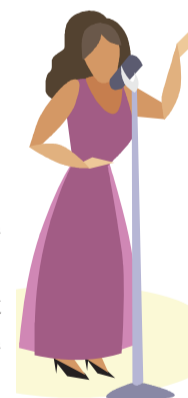
If you would like any further information or would like to become involved please contact Chrissy Walton on 01325 300700.

Aycliffe Youth Councillors in action at a recent meeting



MAYOR'S CHARITY CABARET NIGHT THURSDAY, 14TH OCTOBER 2010

Tickets are now on sale for the Mayor's Charity Night to be held in the Royal British Legion Club, Macmillan Road, Newton Aycliffe on Thursday, 14th October. Tickets are priced at £5 and include Pie and Peas, Cabaret Acts and Bingo. Proceeds from the evening will be in aid of the Chyrelle Addams Breast Cancer Appeal Trust and Domestic Violence (WVWA).



Senior Citizens' Excursions



The Senior Citizens Excursions took place between 7th June and 16th July and the venues this year were Blackpool, The Lake District, Scarborough, Whitby and South Shields.

There were 1472 applications of which 44 people failed to show up without notification and 75 others cancelled prior to their allocated date leaving 1353 people who actually travelled.

There were insufficient applications for the wheelchair accessible coach to four of the destinations which were subsequently cancelled.

The survey forms collected at the end of each day are analysed to assist Council Members to select the venues for next year as well as making sure that the hotels and comfort stops are giving us a good service.



FOCUS ON THE CROCUS

In early October Great Aycliffe Town Council will be teaming up with the Rotary Club of Newton Aycliffe to offer the opportunity to every primary school in the town to plant crocus bulbs in prominent locations around the town.

The reason behind this is for the past 25 years Rotary International has been at the forefront of Polio eradication worldwide. To coincide with their 2011 campaign the Rotary club are planting millions of purple crocus bulbs throughout the United Kingdom during October, these bulbs will then flower in February 2011.

Purple is the chosen colour as it is the colour of ink put on the finger of a child to indicate that the child has been inoculated against this deadly virus.

The aim is by planting the purple crocus this will raise the awareness of this cause. To find out more details please feel free to contact the Environment Officer at Great Aycliffe Town Council on 01325 300 700.

BLOOMING LOVELY

For several years Great Aycliffe Town Council have been managing areas around the town as wild flower meadows, the most notable location being near the train station. The sculpture on the grassland depicts a common blue butterfly resting on an orchid; both of which are a regular sight during the summer.

Meadows are managed by allowing the natural plants to flower and disperse their seeds before cutting and removing the vegetation in later summer, by doing this the seed bank will improve over several seasons producing a richer show of flowers year on year.

This year several new meadows have been created around the town including both the Town and Woodham parks. At the moment, these areas appear to be little more than rough grassland, but given a few years these meadows will flourish into colourful grassland like elsewhere in the town.

Other particularly species rich areas can be found through Woodham Burn and in West Park. Many people walk by these meadows and may notice the impressive display of natural colour but on closer inspection these areas are often made up of a diverse range of plant species.

If you would like to know more about these areas please contact the Environment Officer on 01325 300 700.

GREAT AYCLIFFE SHOW



Once again the Show was successful despite the high winds on the Sunday, however, most events were able to carry on with only minor disruption. Thousands of spectators who attended the show saw many forms of entertainment together with an excellent display of Handcraft and Horticulture Exhibits. This year had a record number of entries ranging from sausage rolls to scarecrow models. The horticultural show was a success and was sponsored by Gregg Little Testing Centre, who supplied a special prize of a TV for the Best Leeks in the Show, Anthony Dixon presented the prize to Gary Parsons. The handcraft exhibition was sponsored by Deco Engravers (Bishop Auckland) who supplied the trophies and engraving. The World War II exhibition had everything from machine guns to ration packs. It was an extremely lifelike display of army living during the war period with authentic costumes.

The Playhouse Marquee had performances by local dance troupes, Suzanne Douglass and Beatlemania. On Sunday the 'A' Factor took place and was judged by a panel of local judges. The winner was Eve Conway and the Mayor of Great Aycliffe, Councillor Dorothy Bowman, presented the prize.



ENVIRONMENTAL ACTIVITIES FOR THE PEOPLE OF AYCLIFFE

An Eco Centre at Moore Lane and Great Aycliffe Town Council's Environmental Officer is available to school and community groups to take part in all types of environmental studies.

Activities are tailored to the individual group's requirements and can be offered in most environmental fields including:

- Wildlife and habitat studies- ranging from fun outdoor activities such as pond dipping or minibeasting to more practical workshops such as bird box making or habitat improvements.
- Climate and seasonal change - With Autumn fast approaching this is the ideal time to offer a session on seasonal change. Themes can include autumn colour, hibernation and the various forms of seed dispersal.
- Geology- basic talk on the geology that can be found in the area and how it affects the local surroundings.
- Talks in the evenings - Various illustrated tailored talks can be provided for groups interested in the local environment.

Community groups can be as diverse as scout and boy's brigade, Woman's Institute, church groups, mental and physical health groups and general interest organisations. To find out more about these activities please contact Great Aycliffe Town Council's Environment Officer, Steven Cooper, on 0777 9090 842 or e-mail steven.cooper@great-aycliffe.gov.uk

DANCE MATS Great Aycliffe Show saw the dance mats officially launched by the Mayor of Great Aycliffe, Councillor Dorothy Bowman, who was one of the County Councillors who helped fund the mats.

The Town Council will shortly be embarking on a great new way to have fun and exercise at the same time.

A 12 mat interactive multiplayer dance mat system was recently purchased using funding from the Durham County Councillors, Neighbourhood Budget allocation and Aycliffe Youth Council.

The dance mats will be available for voluntary and community groups from the Great Aycliffe area to use from November 2010. Please contact the Oakleaf Sports Complex 01325 300 600 for details.



PRE-SCHOOL LEARNING CENTRES



Great Aycliffe Town Council prides itself on its reputation for providing high quality care and education in its two Pre-Schools, which are located in:-

St. Oswald's Park, Wren Close
Woodham Burn Community Primary School, Humphrey Close

The opening hours at St. Oswald's Pre-School have recently been extended to 8.45am to 3.30pm

Woodham Burn Pre-School is open 8.45am to 3.15pm

Both Pre-Schools are open Monday to Friday during school term time providing care and education for all children from their 3rd birthday, on a full or part time basis.

We offer flexible hours to meet the individual needs of parents, and 15 hours a week **FREE** educational places are available the term after a child's 3rd birthday.

If your child is not entitled to educational funding then the cost is **ONLY** £3.00 per three hour session.

Additional hours (in excess of the first 15) are available in both Pre-schools at a cost of £3.50 per hour

Why not come along to see what we can offer you and your child



For further information please contact Jackie Swainston on 01325 319880



NEW MANAGER

Miss Judith Simpson has been appointed as the new Manager of the Sports Complex. Judith was previously employed as one of the Duty Managers at the Complex. Best wishes and congratulations on her appointment.



Oak Leaf SPORTS COMPLEX

SCHOOL AYCLIFFE LANE
NEWTON AYCLIFFE

01325 300600

www.great-aycliffe.gov.uk

WEEKLY JUNIOR COACHING SESSIONS

SQUASH EVERY TUESDAY

4.15pm to 5.15pm Beginners
5.15pm to 6.15pm Intermediates
Only £2.00 per session
Coaching with Bill West

PASS EVERY SATURDAY

Play Active Sports Saturdays
9.30am until 11am
Only £2.00 per session
with Stephen Waddingham
Try lots of different sports

Contact reception on
01325 300600 for more details

Annual Fireworks Display

Friday 5 November 2010

at School Aycliffe Playing Fields

Lighting of Beacon 7pm with Display to follow

Funfair And Refreshments Also On Site



PLEASE NOTE: FOR SAFETY REASONS THE USE OF YOUR OWN FIREWORKS OR SPARKLERS WILL NOT BE PERMITTED ON THE SITE. Thank you.

MAKE A NIGHT OF IT AND BRING THE FAMILY FOR A MEAL BEFORE THE FIREWORKS BEGIN

SNACKS

JACKET POTATOES

Beans OR Cheese OR Tuna £2.75 • Chicken & Bacon £3.25

LIGHT BITES/CHILDREN'S MEALS

(see also small portions above)

Fish Fingers, chips & peas or beans £3.75
Chicken Bites, chips & peas or beans £3.95

SNACKS

Bacon Bun £1.95 • Chip Buttie £1.95
Burger with Egg, or Bacon, or Cheese £2.50 • Portion of Chips £1.60

SANDWICHES - served with salad garnish & crisps

Tuna with Mayonnaise £2.45 • Cheese and Onion £2.45
Chicken and Bacon £2.95

MEALS

Large Portion £5.00

Small Portion £3.00

Home Made Lasagne & Chips
Mushroom Stroganoff & Rice

Quiche, Chips & Salad • Chicken Curry & Rice
Cottage Pie & Peas • Chilli & Rice

Dessert £2.75

All Available from 2.30pm until 9.30pm

JUNIOR HOLIDAY COURSES FOR OCTOBER

BOWLS COACHING 8-15years

Monday 25th October 2010

10:30-12:00

Members £2.25, Non Members £2.65



CRAFTY KIDS 8-15years

Wednesday 27th October 2010

15:45-17:15

Making things to eat and drink to take home
Members £3.00, Non Members £3.50



ARCHERY COACHING 8-15years

Tuesday 26th October 2010

9:30-11:30 or 12:00-14:00

Members £3.00, Non Members £3.50



FOOTBALL COACHING 8-15years

Thursday 28th October 2010

13:00-16:00

Members £4.50, Non Members £5.25



ACTIVITY DAY 8-15years

Wednesday 27th October 2010

09:30-15:30

Come and try Football, Golf Driving Range,
Archery etc. £11.00 - Bring a packed lunch



MINI ACTIVITY SESSION 4-7years

Friday 29th October 2010

09:30-11:00

Games, Crafts, Sports, etc. Parents need not stay.
Members £2.25, Non Members £2.65



Tel. 01325 300 600 for further information

Oak Leaf GOLF COMPLEX

SPECIAL OFFER

6 MONTH FULL SEASON
TICKET FOR THE PRICE
OF 5 MONTHS
Offer available from
1st October 2010
until 31st March 2011

Adult 7 Day £120
Adult 5 Day £95
Over 60s 7 Day £100
Over 60s 5 Day £80
Junior* £25

* Plus £11 Junior Golf Club Fee

Application forms are available from the Golf
Professional's Shop, Oakleaf Golf Complex,
School Aycliffe Lane, Newton Aycliffe or for more
information please call 01325 310 820