



Big enough to matter  
Small enough to care

# Great Aycliffe Town Council

Council Offices - School Aycliffe Lane - Newton Aycliffe - Co. Durham DL5 6QF

Telephone: 01325 300700 • Fax: 01325 301053

Email: [info@great-aycliffe.gov.uk](mailto:info@great-aycliffe.gov.uk) • Website: [www.great-aycliffe.gov.uk](http://www.great-aycliffe.gov.uk)



18th July 2014



Great Aycliffe Town Council present

## FUN IN THE PARKS 2014



**FREE : Fun Fair : Punch and Judy : Balloon Modelling : Magic Shows : Face Painting**  
Plus FREE games and much more to take part in - come along and join the fun!! 11am - 3pm EACH DAY

### TUESDAYS

**22nd July - Town Centre Park**

Plus 2 face painters, craft marquee and football competition held by NAYFC

**29th July - Moore Lane Park**

Plus Eco Centre activities, pole lathe demonstration and much more

**5th August - Simpasture Park**

**12th August - St Oswald's Park**

**19th August - West Park**

Plus pond dipping

**FOR FURTHER INFORMATION TELEPHONE 01325 300600**

### FRIDAYS

**25th July - Oak Leaf**

**Sports Complex**

Plus Krafty Kritters and their interesting animals

**1st August - Aycliffe Village Park**

**8th August - Woodham Park**

**15th August - Horndale Park**

**22nd August - Town Centre Park**

Our final venue for this year



Town Park



Simpasture Park



Horndale Park



Byerley Park



West Park



St Oswalds Park



Moore Lane Park



Woodham Park



Aycliffe Village Park



## Town Pride Environment Week

During early July primary schools across Aycliffe have taken place in Great Aycliffe Town Council's Environment Week. With the assistance of Aycliffe Youth Council selected classes from every Primary school in the parish were given the opportunity to take part in an interactive presentation about litter and the potential consequences if litter is discarded inappropriately.

Facts such as how long various pieces of litter takes to decompose and how some animals can fall victim to littering amazed many participants during the thought provoking display.

Children were then given an opportunity to help their local environment by taking part in a litter pick in the local community.

This annual campaign aims to raise the awareness of the problem of littering and hopefully influencing children to both act responsibly and act as ambassadors, passing on the key messages to family and friends.



## Summer Countryside Events

CELEBRATION OF CYCLING AND GREEN WOODWORKING - Tuesday 29th July - 11am-3pm

Bring along your bike to coincide with Fun in the Park at Moore Lane Eco centre. The police will be attending to offer bike security stamping, Durham County Council will be offering a free cycling challenge and the cycle group from the Pioneering Care Partnership will be bringing along their static bike training facility. In addition there will be a chance to try your hand at green woodworking to make things like rolling pins and chair legs. All this is FREE and in addition to the usual attractions associated with Fun in the Park.

**POND DIPPING AT BYERLEY PARK - Monday 4th August - 1.30pm-3.30pm**

The ponds at Byerley Park Nature Reserve are teeming with life at this time of year. Bring your nets, buckets and wellies as we attempt to discover some of the fascinating creatures which live in this area of the town. Meet at the ponds off the Middridge Road.

**FACINATING FLOWER FOLKLORE - Wednesday 6th August - 2pm-3.30pm**

The meadow below Humphrey Close in Wodham Burn is one of the best wildflower collections in the area. Spend a little time learning what plants we have on our doorstep and some of the things they have been traditionally used for. Meet at Footbridge near Humphrey Close.

**KRAFTY KRITTERS - Monday 11th August - 10am-11am**

Come along to Moore Lane Eco Centre and meet some of the amazing and interesting animals of Krafty Kritters. You will get the chance to handle many of the animals and learn all about where and how they live in the wild. Booking will be essential by contacting the Town Council on 01325 300700.

**CLAY MODELLING - Monday 11th August - 11.30am-12.30pm**

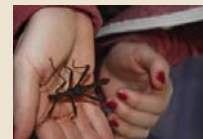
Following on from Krafty Kritters here is your opportunity to get all artistic. Use the animals you have just met to inspire yourself to create your own clay model which you can take home and decorate as a reminder of the day. Meet at Moore Lane Eco Centre

**MINI BEASTS OF MOORE LANE - Wednesday 13th August - 10.30am-12 noon**

Spend some relaxing time searching for the various insects which make the park at Moore Lane home. The Environment Officer will be on hand to help identify what we find and explain some of the fascinating facts about these animals. Meet at Moore lane Eco Centre.

**PONDDIPPING IN WEST PARK - Tuesday 19th August - 11am-2pm**

As part of the sites Fun in the Park there will be an opportunity to discover the varied creatures which make the lakes in West Park home. Nets and trays will be provided.







Sports Complex

**SCHOOL AYCLIFFE LANE  
NEWTON AYCLIFFE**

**01325 300600**

[www.great-aycliffe.gov.uk](http://www.great-aycliffe.gov.uk)

## SUMMER JUNIOR ACTIVITIES

### FUN WITH BALLS

**Monday 21st July**

9am until 10am

Try Dodge Ball, Volley Ball  
and much more...

### MINI ACTIVITY SESSION

**Wednesday 23rd July**

**Monday 18th August**

**For ages 4 to 7 years**

9.30am until 11am

Big fun for little people

### ARCHERY

**Thursday 24th July,**

**Thursday 31st July**

**Thursday 7th August**

**Thursday 14th August**

**Thursday 21st August**

**Thursday 28th August**

9.30am until 11am

Perfect for any budding Robin Hoods  
or Maid Marions

### CRAFTY KIDS

**Monday 28th July**

**Wednesday 20th August**

9.30am until 11am

### SQUASH

**Wednesday 30th July**

11am until 11.45am

**5 to 7 years**

12noon until 1pm

**8 to 12 years**

### TEAM GAMES

**Monday 4th August**

**Wednesday 27th August**

9am - 10am

Fun guaranteed!

### RACQUETS AND BATS

**Wednesday 6th August**

10am until 11am

Rounders, table tennis  
and much more...

### FUTSAL

**Monday 11th August**

9am until 10am

The ultimate indoor 5 a-side  
football experience

### MINI FUN WITH BALLS

**Wednesday 13th August**

10am until 10.45am

**4 to 7 years**

Fun and exciting games,  
perfect for your  
little ones

Courses take place during the  
school 6 weeks holidays, to book  
your place or for further details  
please contact us on **01325  
300600** - Booking is Essential -  
Sessions are for ages 8-15 years  
(except mini sessions)



## Junior Squash, Badminton & Table Tennis Courts

### Special Offer

Something exciting is  
happening during all  
school holidays!

**YOU can play squash,  
badminton or table  
tennis at our special  
offer rate of just £1  
per person, plus FREE  
equipment hire!**

Available

**Monday - Friday**

**9am and 4pm**

**For ages  
8 - 15 years -  
drop in or  
book to play  
the same day**



## SENIOR CITIZENS' EXCURSIONS

The Senior Citizens' Excursions are one of the most popular events provided by the Council. Each year, we organise a series of free excursions for the senior citizens (60 years or over) who live in our Parish.

The picture shows residents having lunch at the Coniston Hotel, Skipton.

The coaches provided are 49-53 seater executive coaches with toilet facilities. There is also a 53 seater executive coach with a wheelchair hoist to each destination. This ensures that even people with severe mobility problems can still enjoy a day out. The hoist can be used for loading wheelchairs for those residents who need to travel in their wheelchair, or for use by people who cannot manage the steps on the coach.

The application forms and information booklets are available in April or May each year from the Council Offices, Golf and Sports Complexes, Recreation Centre (Beveridge Way) and the Library in the Town Centre.

This year, residents had the choice of visiting Whitby, Northumberland, Skipton, Scarborough, or South Shields for the day with a three course meal and tea or coffee provided in a good quality hotel with disabled facilities. Most of the excursions make a comfort break stop en route to the destination and also on the homeward journey. On one of those comfort breaks, the Council pays for morning or afternoon refreshments. The Skipton and South Shields excursions made no stops either way.

Each person who qualifies is entitled to one 'trip'. To qualify you must be aged 60 or over and must have lived in the electoral parish by 1st April in the year of travel.

This year, there were 1337 applications.



## Community Enhancement Award



The Town Council wishes to receive nominations from local residents within the Great Aycliffe area for the awarding of Certificates of Merit for individual front gardens, front floral displays or streets that enhance the overall visual appearance of the area.

Please return this nomination form to Great Aycliffe Town Council Offices, School Aycliffe Lane, Newton Aycliffe, Co. Durham. DL5 6QF or e-mail the details of your nomination to: [info@great-aycliffe.gov.uk](mailto:info@great-aycliffe.gov.uk) before the closing date of Friday, 15th August 2014.

I would like to nominate the following for a Certificate of Merit:

House No: ..... Street: .....

or Full Street: .....



School Aycliffe Lane

Newton Aycliffe

T. 01325 310820

[www.great-aycliffe.gov.uk](http://www.great-aycliffe.gov.uk)

**2014/2015**

## 9 MONTH SEASON TICKET SPECIAL OFFER

**UNLIMITED GOLF UNTIL 31st MARCH 2015**

Adult 7 Day Ticket £250 - Adult 5 Day Ticket £200

Senior Citizen (over 60) 7 Day £200 - Senior Citizen 5 Day £175

18-21 years in full time Education £125

Junior 14-18 years £75 - Junior 10-14 years £50 - Under 10 £25

## GREEN FEE SUMMER SPECIAL OFFER

**Play between 1pm & 5pm Monday to Friday for only**

**£10 per round (adults) or £7.50 (concessions)**

**18 HOLE COURSE - FLOODLIT DRIVING RANGE - BUGGY HIRE**

**CHANGING FACILITIES - SHOP - COACHING AVAILABLE from PGA JULIE WELCH**

**BAR AND CATERING AVAILABLE AT THE OAKLEAF SPORTS COMPLEX**

## MAYOR'S CHARITY GOLF TOURNAMENT

**OAKLEAF GOLF COMPLEX &  
OAKLEAF SPORTS COMPLEX**

**FRIDAY 5th SEPTEMBER 2014**

(Tee Off Times between 12 noon and 2.30 p.m.)

**Entry Fee - £100 per team**

(Includes Meal and Presentation Evening)

**In Aid of the Mayor's Charities**

**Cruse Bereavement Care &**

**County Durham School Benevolent Fund**

Further Information and Application Forms from Christine Ryder, Mayor's Secretary,  
[christine.ryder@great-aycliffe.gov.uk](mailto:christine.ryder@great-aycliffe.gov.uk), 01325 300700 or the Oakleaf Golf Complex.



## NEIGHBOURHOOD PLAN – What's it all about?

### Date for your Diary - Thursday 24th July 2014

#### “Big Consultation Event” Help us PLAN the future of Great Aycliffe

We recently told you about the Neighbourhood Plan. The Neighbourhood Plan is a very important document it will help PLAN for things that are important to the residents and businesses of Great Aycliffe. It will become a statutory planning document that will steer future development of our neighbourhood areas. It is only about planning but an important factor to note is that it's not about saying NO to development.

You are invited to a “Big Event” where I will talk to you about the work we are going to be doing over the coming months. More importantly we will be asking you for your views on what our priorities should be. **The event will be held at Newton Aycliffe Youth & Community Centre on Thursday 24th July 2014, 5pm to 6pm.**

Between 5pm-6pm, you can drop in at any time to have a look at some of the things we are doing and give us your views and priorities for the town. If you have an issue with Transport, Employment, Environment, Housing, Retail or anything else we urge you to come along and have your say and help us PLAN a better future for Great Aycliffe. Guests will take part in a series of workshops to gather initial priorities for the plan.

Angela Corner, Great Aycliffe Neighbourhood Plan, Community Neighbourhood Engagement Officer. I have recently been employed by Great Aycliffe Town Council as the Community Neighbourhood Engagement Officer for the Great Aycliffe Neighbourhood Plan. I have lived in Newton Aycliffe for 38 years and attended the Avenue Comprehensive. I worked for 12 years as a Project Manager at Stockton Citizens Advice Bureau, focussing on Financial Inclusion and Legal Advice Qualifications. I managed projects from design



to completion, developing these by consulting with the public and organisations to address the financial needs of people (usually the hard to reach) within the Stockton community, securing funding and contracts to deliver those services.

As a resident of Newton Aycliffe it is a great pleasure to be working on something as special and important as the Neighbourhood Plan. Being a part of the planning of the future of Great Aycliffe is a privilege.

I will be running a series of events, sessions and workshops across Aycliffe to hear your views and ideas for the Plan so please keep an eye out for me.

I look forward to working with you all.

### Great Aycliffe Neighbourhood Plan – Vacancy

An additional member of the public is needed to complete the Neighbourhood Plan Steering Group.

- Do you live or work in the Great Aycliffe Area?
- Are you over 16 years of age?
- Are you able to attend one meeting per month to help steer the Neighbourhood Plan?
- Do you have a positive can do attitude?

An interest or experience in PLANNING would be beneficial, in addition to community engagement but is not necessary.

There will be a form to complete and a selection process to undertake. This is a voluntary position which may last 2 years.

The main roles of the Steering Group will be

- 1) To produce a sound Neighbourhood Plan that defines the planning policy priorities identified by the community, residents and businesses of the Great Aycliffe Parish.
- 2) To determine the overall scope and objectives of the plan.
- 3) To advise on the development and co-ordination of the Great Aycliffe Neighbourhood Plan.
- 4) Take an active part and assist in the research activities conducted by the various groups and organisations whilst developing the Great Aycliffe Neighbourhood Plan
- 5) To monitor the progress of work being undertaken by the various task/thematic groups and individuals.

- 6) Actively support and promote the preparation of the Great Aycliffe Neighbourhood Plan.

For further information and an application pack please contact Chrissy Walton or Angela Corner, Great Aycliffe Town Council, Council Offices, School Aycliffe Lane, Newton Aycliffe DL5 6QF, by telephone 01325 300700 or at [www.great-aycliffe.gov.uk](http://www.great-aycliffe.gov.uk).

The deadline for receiving applications is **MONDAY 28th JULY 2014**.

Interviews by a small panel will take place on **THURSDAY 7th AUGUST 2014**

## PRE-SCHOOL LEARNING CENTRES

### ST. OSWALD'S PRE-SCHOOL

is located in St. Oswald's Park, Wren Close, and is open from 8.45am to 3.30pm Monday to Friday during school term time.

A full day at St. Oswald's costs £15.00 with funding and £18.50 without.

### WOODHAM BURN PRE-SCHOOL

is located in Woodham Burn Community Primary School, Humphrey Close, and is open from 8.45am to 3.30p.m. Monday to Friday during school term time.

At Woodham Burn we work closely with the Out of School Club, (under

separate management), to enable children to access care and education from 7.45am to 6.00pm.

A full day at Woodham Burn cost £14.00 with funding and £17.50 without.

The Out of School Club charge £3.50 for before school (7.45 to 8.55) and £6.50 for after school (3.15 to 6.00pm).

Additional hours (in excess of the first 15) are available in both Pre-Schools at a cost of £4.00 per hour.

Why not come along and see what we can offer you and your child.

For further information please call into the Pre-Schools (no appointment needed) or contact Jackie Swainston on 01325 319880

A quality service provided by Great Aycliffe Town Council



This is the Great Aycliffe Show's final year however it will be replaced by Great Aycliffe Festival.

The details of the Festival are not yet finalised, however the date has been set as **Friday 3rd to Sunday 12th July 2015**, 10 days encompassing two weekends.

The concept of the Festival is to involve as many of the local groups, businesses and voluntary organisations as possible, encouraging them to organise an 'event' within the timeframe of the Festival. Support will be available from the Town Council if required.

It is anticipated that the 'events' organised by the local community will provide a wide variety of experiences for children and adults and will hopefully deliver a range of activities throughout the Parish.

Local groups, businesses, organisations and individuals who are interested in becoming part of the Festival are welcome to attend an **open evening**

at the Newton Aycliffe Youth & Community Centre, Burn Lane, Newton Aycliffe on either **Monday 11th August or Thursday 14th August 2014 at 6pm** to discuss their possible involvement with the Aycliffe Festival in 2015.

It is hoped that the outcome of the meetings will be that groups will give further consideration or agree in principle to providing a community event during the timescale of the Festival.

Light refreshments will be provided and it would be helpful if we know if you are coming. **Please telephone 01325 300700 or e-mail [marie.robinson@great-aycliffe.gov.uk](mailto:marie.robinson@great-aycliffe.gov.uk)** to advise us whether you or a member of your group/organisation/business will be able to attend to allow us to cater for you.

If you are unable to attend on that date, but would be interested in receiving further information when it is available, please contact us and we will add you to our Festival mailing list.

## MEDIUM TERM FINANCIAL PLAN - Council Facing a Difficult Future

The Council has recently approved its latest Medium Term Financial Plan which sets out the Council's financial strategy for the five year period 2014/15 to 2018/19. The Plan highlights the various financial challenges facing the Council over this period and aims to put in place a financial strategy to address those challenges.

Of greatest concern for future years, is that the Council is now reliant upon Council Tax Support Grant funding paid by the Government via Durham County Council and which amounts to 20% of the Council's Revenue Budget. It has already been confirmed that this funding will be cut in each year of the Plan and there is always a risk that this funding could be withdrawn in its entirety.

The Council is also facing a number of other budget pressures including inflation, pay awards, other unavoidable budget pressures such as pension and national insurance changes, as well as a likely limit on the amount by which the Council will be able to increase the Council Tax, in future years.

The Plan has been prepared on the key principle of aiming to maintain existing levels of service and staffing structures, wherever possible, while keeping the increase in council tax to the current Government limit of 2% or less.

The Plan concluded that while the Council is currently in a strong financial position with a balanced budget and strong levels of balances and reserves, this position is likely to deteriorate over the life of the Plan making the process of achieving a balanced Revenue Budget increasingly difficult.

By the end of the five years, it is likely that the Council will be in a position where there is no contingency sum or contribution to capital reserves in the Revenue Budget and where there is no further scope for efficiency savings to be delivered. Therefore, whilst it is likely that services will be able to be maintained until the end of the 2018/19 financial year, assuming that the Council makes a 2% increase in the Town Council Tax each year, beyond this the Council is likely to need to begin the difficult process of considering reductions in services and reassessing its priorities in light of the limited resources available.

Additionally, if in any year, the Government limit on council tax increases is reduced from 2%, or worse that the Council Tax Support Grant is withdrawn, service cuts would be required earlier than this.

These issues will be considered in detail via future budget setting processes when options for delivering any required budget reductions and savings, if these are required, will be drawn up and agreed.

The Council will also continue the process of undertaking service reviews and undertake a reassessment and update of the Council's strategic aims and community priorities with a view to determining which services are to be protected and which services may be subject to budget reductions in the longer term.



