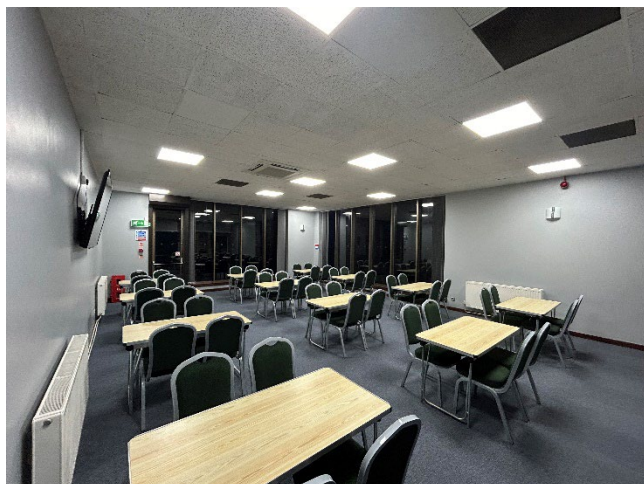
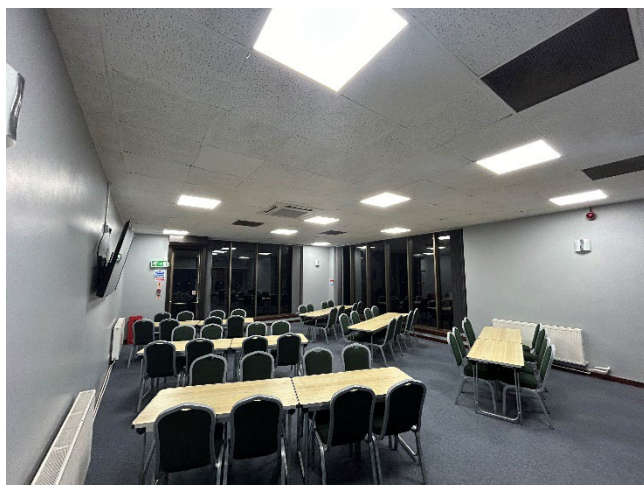
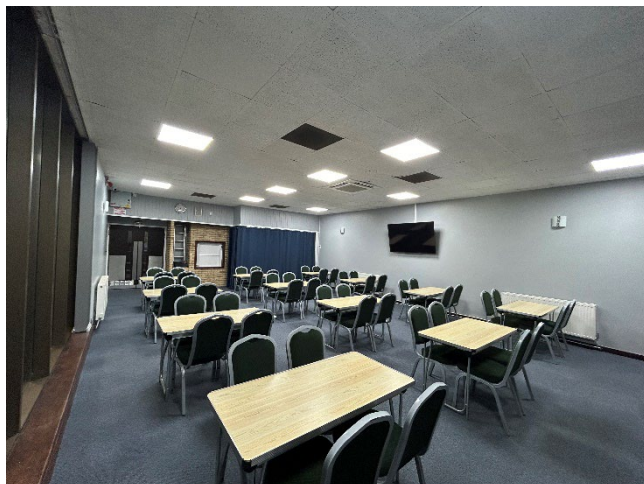


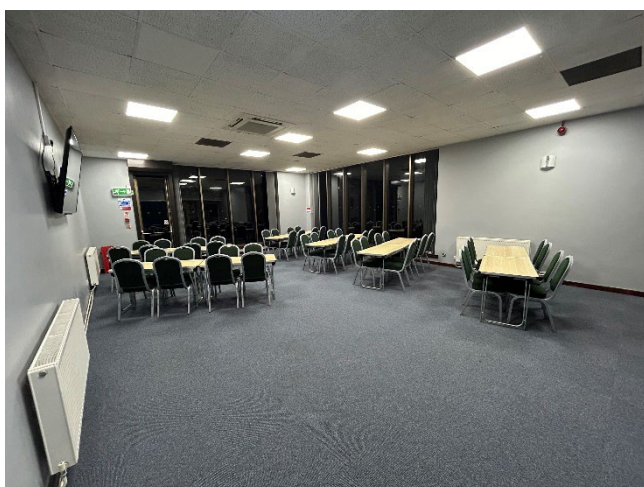
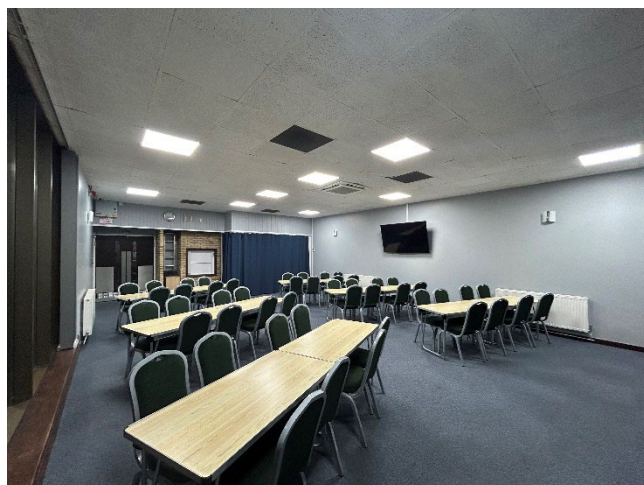
# Room Layouts



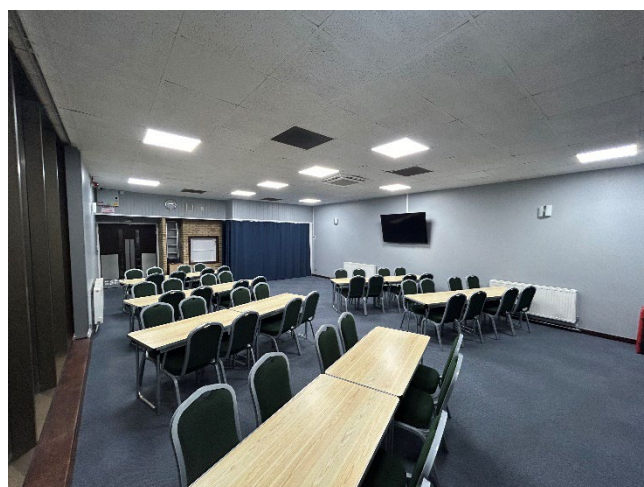
**Classroom – Max 48 People (12 tables, 4 chairs round each table)**



**Herringbone – Max 48 People (6x2 Tables, 8 chairs round each)**

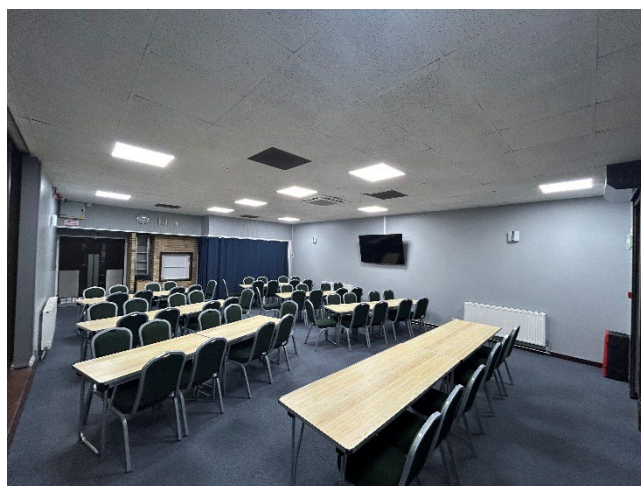
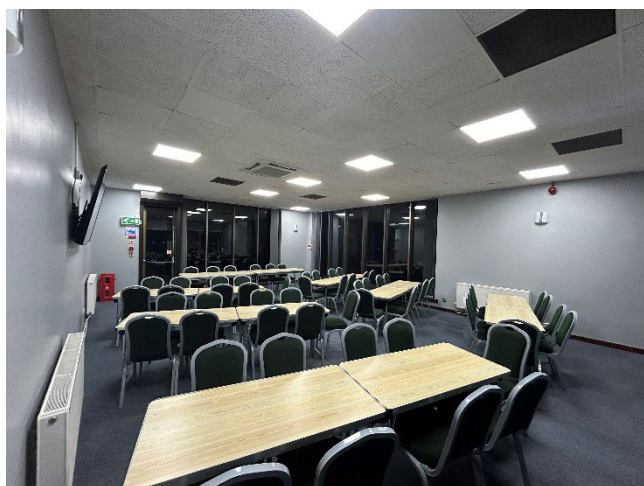


**Herringbone and dance floor space – Max 48 People (6x2 Tables, 8 chairs round each)**



Any layouts with Maximum number of people will require having the buffet table outside of the function room.





**Herringbone with a top table – Max 54 People (6x2 Tables, 8 chairs round each & top table with 6 chairs)**



**Boardroom – Max 24 People (12 Tables, 2 chairs at each table, can add extra 4 chairs on corners)**

Any layouts with Maximum number of people will require having the buffet table outside of the function room.



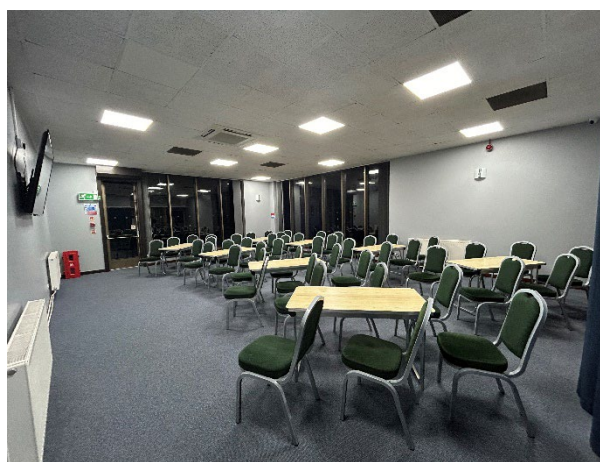
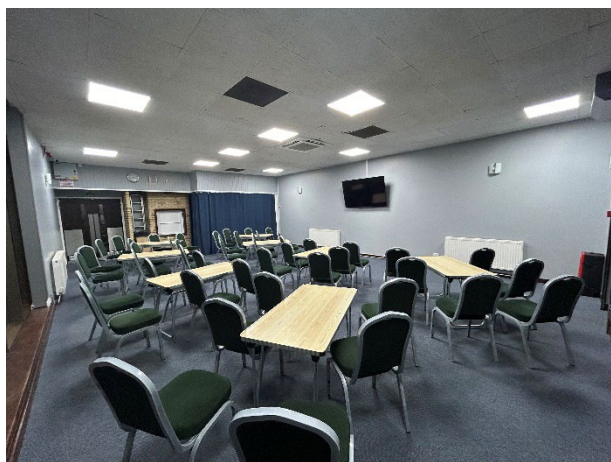
**Seminar – Max 24 People (12x Tables, 2 chairs per table)**



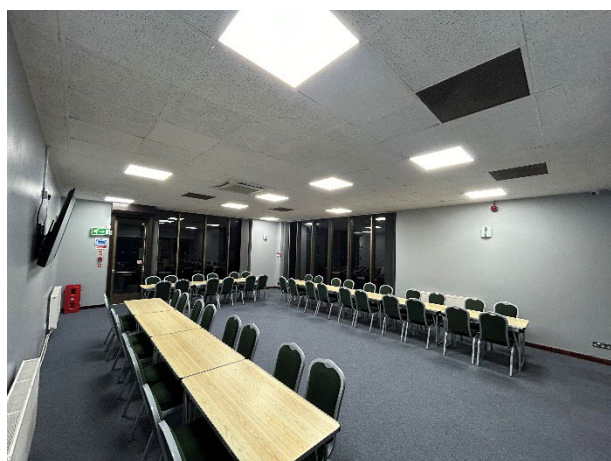
**Theatre – Max 60 people (60 chairs)**

Any layouts with Maximum number of people will require having the buffet table outside of the function room.

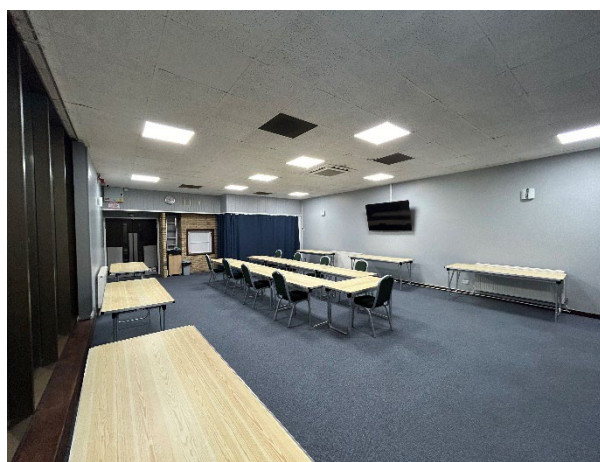
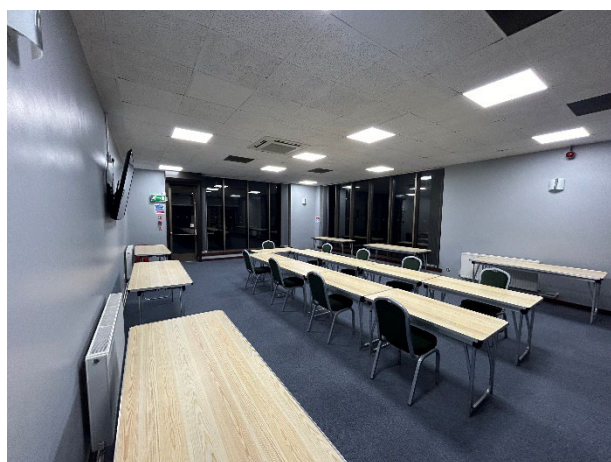




**Lecture – Max 48 People (8 Tables, 6 chairs round each table)**



**Horseshoe – Max 48 people (12 tables, 4 chairs round each table, can add extra 6 chairs to end of each row)**



**Workshop – Max 24 People (12 Tables in middle, up to 2 chairs per table; 6 Large tables around the outside, can be used for buffet too)**

Any layouts with Maximum number of people will require having the buffet table outside of the function room.